

1) CONSTRUCTION:

CONDUCTOR: 28 AWG 7/36 STRANDED TINNED COPPER
 INSULATION: HIGH DENSITY POLYETHYLENE, .008" NOM. WALL THICKNESS

NOM. DIA.
 .015"
 .0325" MIN.
 .0331" MAX.
 .064"

PAIRS: COLOR CODED SINGLES TWISTED INTO PAIRS
 CABLE: (4) TWISTED PAIRS TWISTED TOGETHER TO FORM A CABLE CORE
 SHIELD: AN ALUMINUM POLYESTER ALUMINUM FOIL SHIELD (100% COVERAGE) SHALL BE APPLIED OVER THE CABLE CORE AND SHALL INCLUDE A 28 AWG STRANDED TINNED COPPER DRAIN WIRE IN CONTACT WITH THE OUTER SURFACE.

.146"

JACKET: POLYVINYLCHLORIDE, (COLOR, PER CHART 1), .020" NOM. WALL THICKNESS
 OVERALL CABLE DIAMETER

.186" NOM
 .191" MAX
 (BY CALIPER)

2) PHYSICAL PROPERTIES:

TEMPERATURE RATING, MAX. 75°C
 TEMPERATURE RATING, MIN. -20°C
 WT./M', NOM., NET. 15.2 LBS.
 CHART 1:

| QUABBIN P/N | JACKET COLOR |
|-------------|--------------|
| 2231 | BLACK |
| 2232 | BROWN |
| 2233 | RED |
| 2234 | ORANGE |
| 2235 | YELLOW |
| 2236 | GREEN |
| 2237 | BLUE |
| 2238 | VIOLET |
| 2239 | GRAY |
| 2240 | WHITE |
| 2241 | BEIGE |
| 2242 | LIGHT BLUE |
| 2243 | PINK |
| 2244 | AQUA |
| 2245 | LIME |

3) ELECTRICAL CHARACTERISTICS:

SEE PAGE 2

4) AGENCY APPROVALS:

NEC (UL) TYPE CMR
 CEC C(UL) TYPE CMR

5) APPLICATION:

RoHS COMPLIANT MATERIALS. MEETS TIA 568.2-D CHANNEL REQUIREMENTS AT 56 METERS. 7.8 METERS OF PATCH CABLE WITH A 90 METERS PERMANENT LINK (97.8 METER CHANNEL) OR 10 METERS OF PATCH CABLE WITH AN 86 METER PERMANENT LINK (96 METER CHANNEL). SUPPORTS CAT 6A APPLICATIONS INCLUDING 10GBASE-T AT THESE LENGTHS. PATENT NO. US 9,355,759 B2

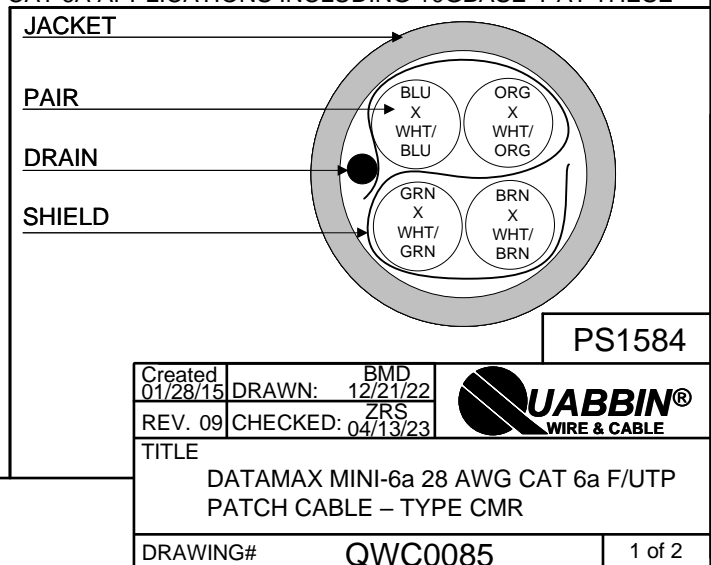
6) PRINT: (WHITE INK ON BLACK JACKET, ALL OTHERS BLACK INK)
 QUABBIN DATAMAX MINI-6a F/UTP PATCH CORD P/N (QWC P/N PER CHART 1) -- PATENT NO. US 9,355,759 B2 -- C(UL)US TYPE CMR 28 AWG 75C -- RoHS -- (LOT DESIGNATOR) (SEQUENTIAL FOOTAGE)

7) COLOR CODE:

1. WHITE/ORANGE X ORANGE
2. WHITE/BROWN X BROWN
3. WHITE/GREEN X GREEN
4. WHITE/BLUE X BLUE

8) PUT UPS

TO BE PACKAGED AS PER QWC'S STANDARD PACKAGING



PS1584

Created 01/28/15
 DRAWN: 12/21/22
 REV. 09 CHECKED: 04/13/23



TITLE
 DATAMAX MINI-6a 28 AWG CAT 6a F/UTP PATCH CABLE – TYPE CMR

DRAWING# QWC0085 1 of 2

CUSTOMER APPROVAL: _____ DATE: _____


3) ELECTRICAL CHARACTERISTICS:

| | |
|-------------------------------|----------------------|
| CAPACITANCE, MUTUAL, NOM. | 13.5 PF/FT. AT 1 MHz |
| DIELECTRIC WITHSTANDING, MIN. | 1500V RMS |
| VOLTAGE RATING, MAX. | 300V |
| D.C. RESISTANCE, NOM. | 68.2 Ω/1000' |

NOTE: TESTING FOR THE FOLLOWING IS CONDUCTED OFF THE REEL, USING 50m LENGTHS. (FOR 100m OF CABLE)

| | | | |
|----------------------------|--------------------|--|--------------|
| IMPEDANCE | 100 ± 15 Ω | 1 - 500 MHz | |
| IMPEDANCE, SMOOTHED | 100 ± 10 Ω TYPICAL | 5 - 500 MHz | |
| RETURN LOSS | 1 ≤ f < 2 MHz | 17 + 9.5 LOG (f) dB MIN | |
| | 2 ≤ f < 10 MHz | 20 + 5 LOG (f) dB MIN | |
| | 10 ≤ f < 20 MHz | 25 dB MIN | |
| | 20 ≤ f ≤ 500 MHz | 25 - 8.6 LOG(f/20) dB MIN | |
| PS NEXT | 1 ≤ f ≤ 500 MHz | 42.3 - 15 LOG(f/100) dB MIN | |
| NEXT | 1 ≤ f ≤ 500 MHz | 44.3 - 15 LOG(f/100) dB MIN | |
| PSACRF | 1 ≤ f ≤ 500 MHz | 24.8 - 20 LOG(f/100) dB MIN | |
| ACRF | 1 ≤ f ≤ 500 MHz | 27.8 - 20 LOG(f/100) dB MIN | |
| INSERTION LOSS | 1 ≤ f ≤ 500 MHz | 1.95 [1.82 √f + 0.0091(f) + 0.25/√f] dB MAX | |
| DELAY | 1 ≤ f ≤ 500 MHz | 534 + 36/√f ns MAX | |
| DELAY SKEW | 1 ≤ f ≤ 500 MHz | <45 ns | |
| TCL | 1 ≤ f ≤ 500 MHz | 30 - 10 LOG(f/100) dB MIN | |
| ELTCTL | 1 ≤ f ≤ 30 MHz | 35 - 20 LOG(f) dB MIN | |
| PS ANEXT LOSS (6 AROUND 1) | 1 ≤ f ≤ 500 MHz | 62.5 - 15 LOG (f/100) dB MIN | 50 - 500 MHz |
| | | 67 dB MIN | 1 - 50 MHz |
| PSAACRF | 1 ≤ f ≤ 500 MHz | 38.2 - 20 LOG(f/100) dB MIN | |
| VELOCITY OF PROPAGATION | 68% | | |

PS1584

| | | |
|--|--------------------------|---|
| Created 01/28/15 | DRAWN: BMD 12/21/22 |  |
| REV. 09 | CHECKED: ZRS 04/13/23 | |
| TITLE DATAMAX MINI-6a 28 AWG CAT 6a F/UTP PATCH CABLE – TYPE CMR | | |
| DRAWING# | | QWC0085 |
| | | 2 of 2 |

CUSTOMER APPROVAL:

DATE: